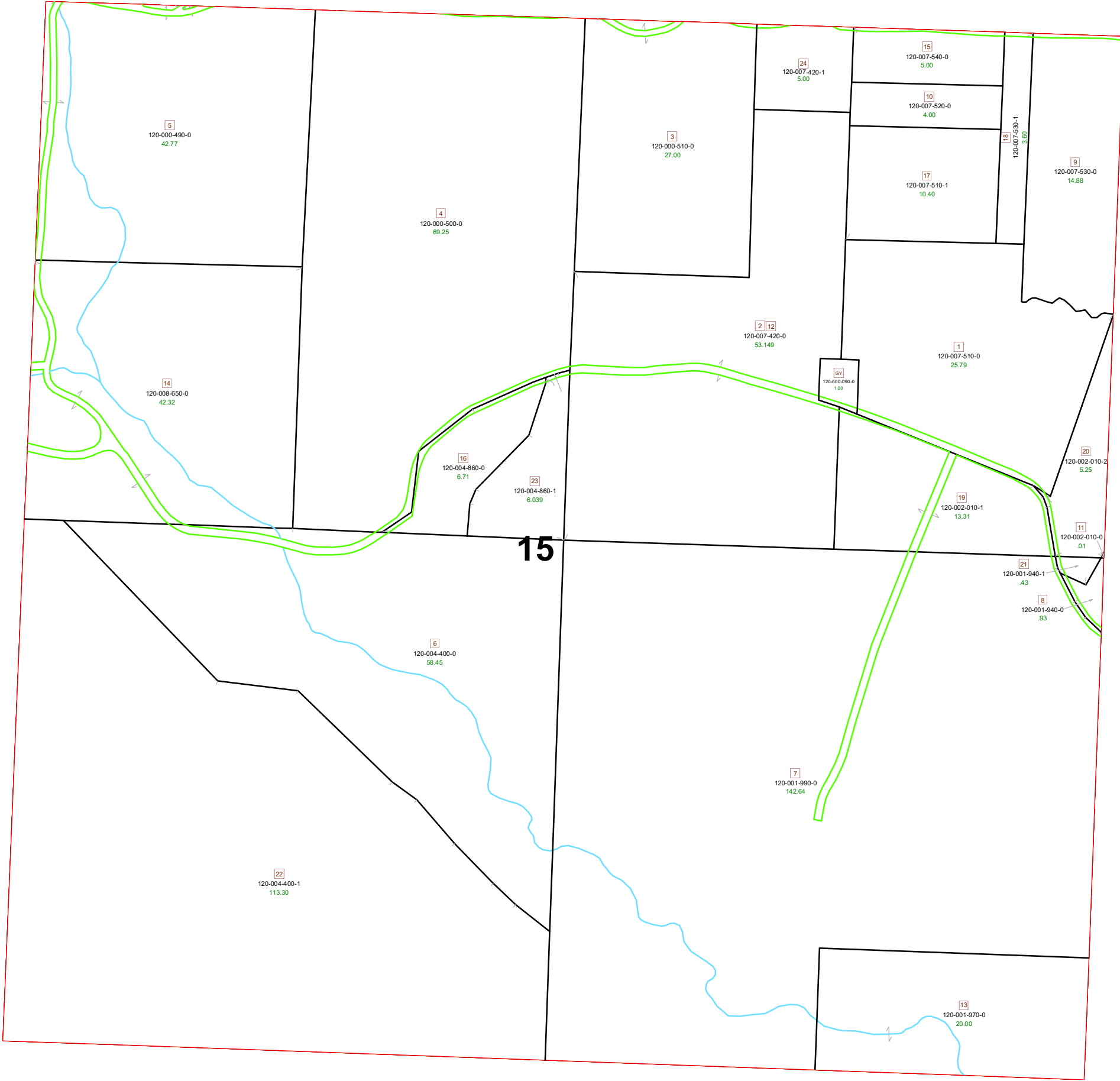
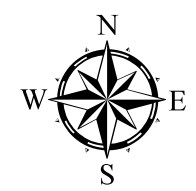


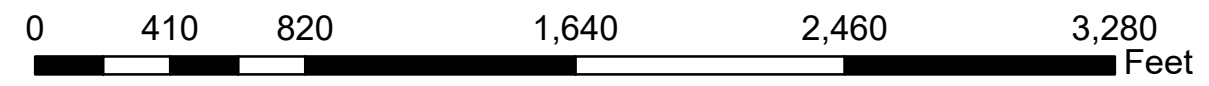
# MEIGSVILLE TOWNSHIP SECTION 15 R11 TWP 10 MORGAN COUNTY, OHIO



| PIN           | VOL     | PAG  | Owner                          | LegalDescr         | Acres  |
|---------------|---------|------|--------------------------------|--------------------|--------|
| 120-000-510-0 | OR203   | 16   | BROTHERS GOLDIE                | R11 T10 S15 SD 3   | 27     |
| 120-000-500-0 | OR203   | 16   | BROTHERS GOLDIE                | R11 T10 S15 SD 4   | 69.25  |
| 120-000-490-0 | OR203   | 16   | BROTHERS GOLDIE                | R11 T10 S15 SD 5   | 42.77  |
| 120-600-090-0 |         |      | CHURCH (CARMEL)                | 0                  | 1      |
| 120-007-510-1 | OR213   | 2319 | HREHA JOHN R SR                | R11 T10 S15 SD 17  | 10.4   |
| 120-007-520-0 | OR213   | 2319 | HREHA JOHN R SR                | R11 T10 S15 SD 10  | 4      |
| 120-007-530-1 | OR213   | 2319 | HREHA JOHN R SR                | R11 T10 S15 SD 18  | 3.6    |
| 120-007-540-0 | OR213   | 2319 | HREHA JOHN R SR                | R11 T10 S15 SD 15  | 5      |
| 120-004-860-0 | OR227   | 429  | KING NANCY TOD: KING RAYMOND G | R11 T10 S15 SD 16  | 6.711  |
| 120-007-420-1 | OR231   | 200  | KOEHNLE PATRICK O & SAMANTHA J | R11 T10 S15 SD24   | 5      |
| 120-001-940-1 | OR177   | 597  | LINDIMORE TYRELL A             | R11 T10 S15 SD 21  | 0.428  |
| 120-002-010-2 | OR177   | 597  | LINDIMORE TYRELL A             | R11 T10 S15 SD 20  | 5.248  |
| 120-004-860-1 | OR223   | 2109 | METHENEY MARK A                | R11 T10 S15 SD 23  | 6.039  |
| 120-008-650-0 | OR208   | 1431 | MOORE EDSSEL D                 | R11 T10 S15 SD 14  | 42.321 |
| 120-004-400-0 | OR100   | 614  | MOORE EDSSEL D C/O CARL MOORE  | R11 T10 S15 SD 6   | 58.45  |
| 120-007-510-0 | D.V 197 | 299  | SAMSON BENJAMIN FRANKLIN ETAL  | R11 T10 S15 SD 1   | 25.79  |
| 120-007-530-0 | D.V 197 | 299  | SAMSON BENJAMIN FRANKLIN ETAL  | R11 T10 S15 SD 9   | 14.88  |
| 120-004-400-1 | OR55    | 4    | TEMPLETON JAMES H & SANDRA K   | R11 T10 S15 SD 22  | 113.29 |
| 120-001-970-0 | OR24    | 589  | TUCKER M VERNON & GRACE I      | R11 T10 S15 SD 13  | 20     |
| 120-001-990-0 | OR24    | 589  | TUCKER M VERNON & GRACE I      | R11 T10 S15 SD 7 S | 142.64 |
| 120-002-010-1 | OR24    | 589  | TUCKER M VERNON & GRACE I      | R11 T10 S15 SD 19  | 13.309 |
| 120-001-940-0 | OR228   | 1088 | WARDEN ROBERT J JR             | R11 T10 S15 SD 8   | 0.929  |
| 120-007-420-0 | OR185   | 715  | WHITE JAMES H                  | R11 T10 S15 SD 2-1 | 53.149 |



| Boundaries |          |
|------------|----------|
|            | Hydro    |
|            | Section  |
|            | Roads    |
|            | Lot      |
|            | Township |
|            | County   |
|            | Parcel   |
|            | ROW      |



Disclaimer: The information that these maps contains is for reference purposes only. Please bring any erros to the attention of the Engineer's Office staff. Thank you